

Home & Land Package



Lot 26

Beaudesert Road
Parkinson, QLD 4115

Fixed Price - Full Turn
\$1,178,828

DONATELLO 226

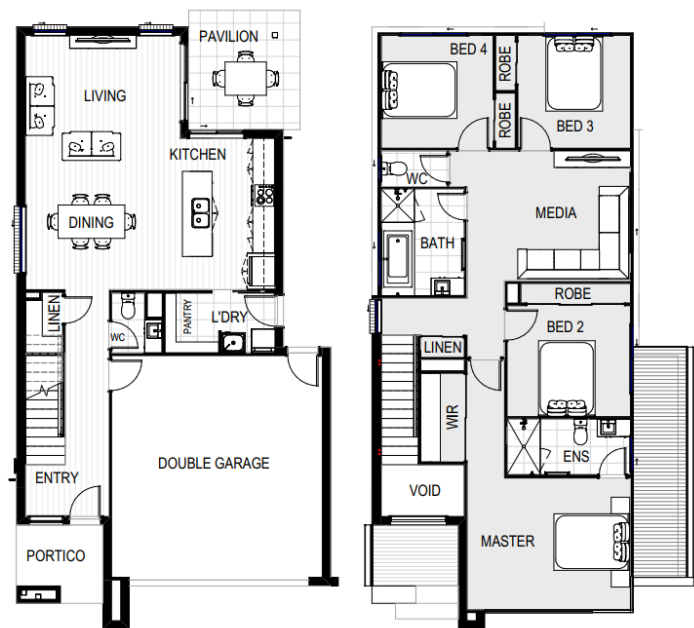


Total Area 226 m²
Build Price \$540,828

Land Area 405.0m²
Land Registration Nov-23
Land Price \$638,000

Featured Inclusions

- ✓ 600mm appliances, including oven, electric cooktop, rangehood
- ✓ 20mm engineered stone bench tops.
- ✓ Laminate vanity unit with 20mm engineered stone top.
- ✓ Stylish above counter basins
- ✓ 2 x split system air conditioning
- ✓ 2400mm nominal ceiling height
- ✓ Up to 10m² garden with a variety of up to 12 plants
- ✓ 6 1/2 Year Structural Warranty
- ✓ 18 week build time guarantee
- ✓ 25 Year termite resistant



SUNIL ROY

0433911309

sales@visionrealty.com.au

All photographs, Facades, colour schemes, floor plans and dimensions are for illustrative purposes only and may vary slightly to the end product. Prices are based on example specifications. Reserved right to change prices without notice. Additional council fees may be payable. Due to individual estate requirements and council guidelines, some typical lot widths may vary and should be used for a guide only. For further terms and conditions please discuss with your home sales consultants.

09-11-2023