

# Home & Land Package



## Lot 168

Beaudesert Road  
Parkinson, QLD 4115

Fixed Price - Full Turn  
\$829,067

### Kahlo 210

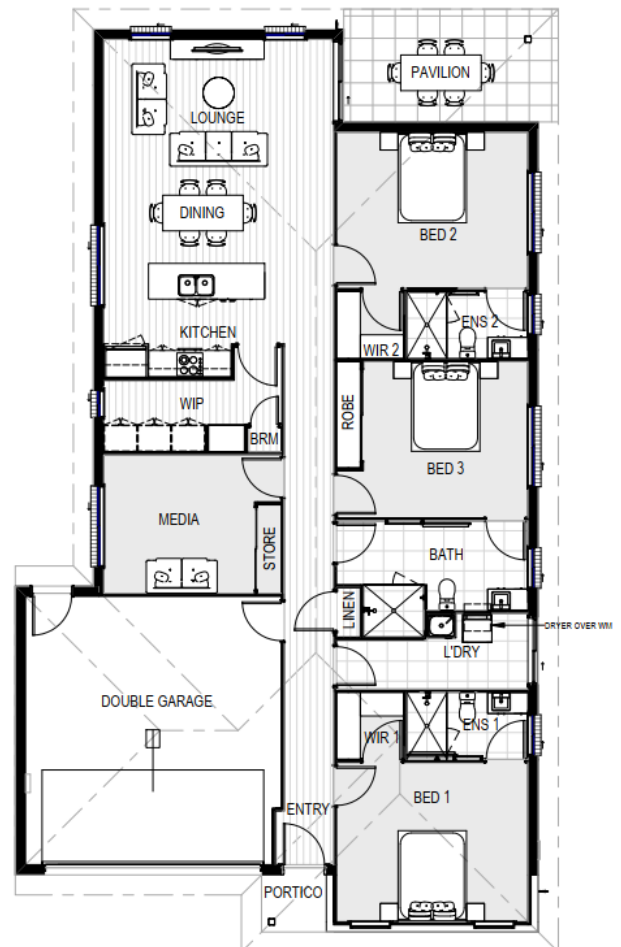


Total Area 210 m<sup>2</sup>  
Build Price \$454,067

Land Area 476.0m<sup>2</sup>  
Land Registration Nov-23  
Land Price \$375,000

#### Featured Inclusions

- ✓ HIA fixed price contract with engineered slab.
- ✓ QBCC home warranty and insurance.
- ✓ 12-month maintenance warranty.
- ✓ 6-star energy rating or equivalent.
- ✓ Independent quality inspections throughout the building process.
- ✓ Designer kitchen with 600mm appliances, including oven, electric
- ✓ 20mm engineered stone bench tops.
- ✓ Laminate vanity unit with 20mm engineered stone top.
- ✓ Laminate finish cupboards with bulkheads.
- ✓ One (1) split system air conditioning unit to the living area.



SUNIL ROY

0433911309

sales@visionrealty.com.au

All photographs, Facades, colour schemes, floor plans and dimensions are for illustrative purposes only and may vary slightly to the end product. Prices are based on example specifications. Reserved right to change prices without notice. Additional council fees may be payable. Due to individual estate requirements and council guidelines, some typical lot widths may vary and should be used for a guide only. For further terms and conditions please discuss with your home sales consultants.

08-11-2023