

Home & Land Package



Full Turn Key
\$1,076,884

Dual Living 243

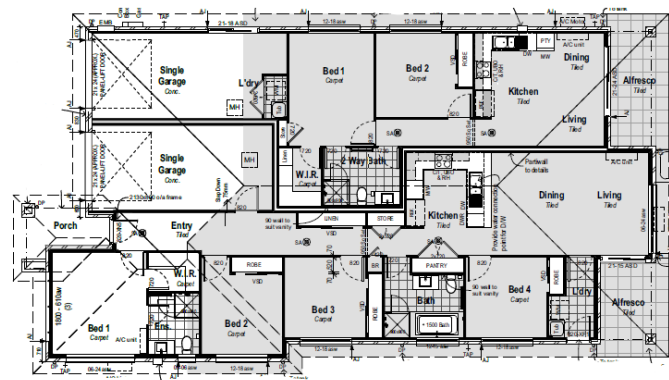


Alfresco
Build Price 243 m²
\$596,884

Land Area 609.3m²
Land Registration August 2023
Land Price \$480,000

Featured Inclusions

- ✓ Full Turnkey finish
- ✓ Fully fenced, turfed & landscaped
- ✓ Colorbond roof
- ✓ 2550mm high ceilings
- ✓ 600mm Stainless steel kitchen appliances
- ✓ 20mm manufactured stone kitchen benchtop
- ✓ Reverse cycle/split system air-conditioner in living and main
- ✓ Approximately 1.8kw solar power system
- ✓ Cold water to fridge space
- ✓ Roller blinds throughout (exc wet rooms)



SUNIL ROY

0433911309

sales@visionrealty.com.au

All photographs, Facades, colour schemes, floor plans and dimensions are for illustrative purposes only and may vary slightly to the end product. Prices are based on example specifications. Reserved right to change prices without notice. Additional council fees may be payable. Due to individual estate requirements and council guidelines, some typical lot widths may vary and should be used for a guide only. For further terms and conditions please discuss with your home sales consultants.

03-11-2023