

Home & Land Package



Fixed Price - Full Turn
\$1,371,270

ALPINE 23

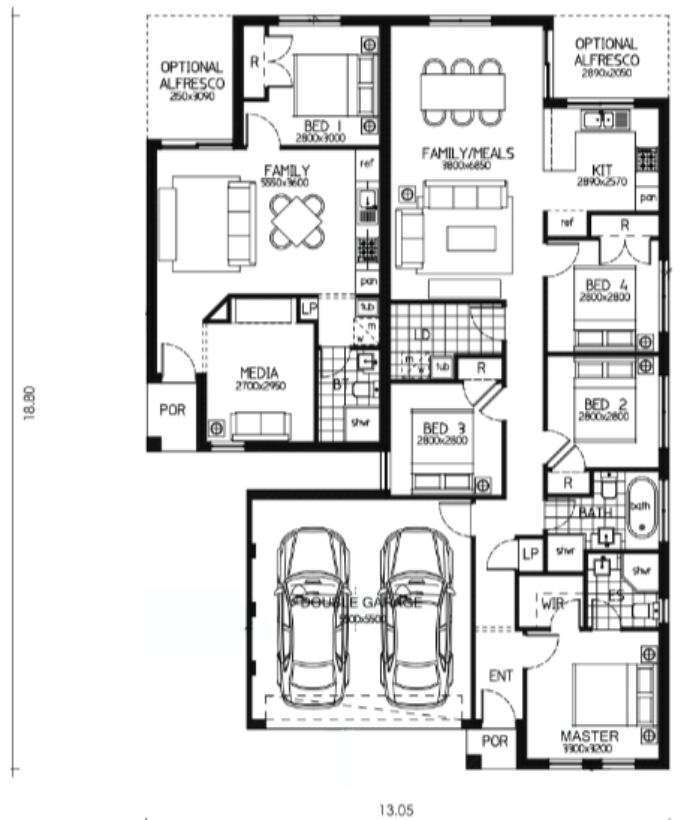


Total Area 203 m²
Build Price \$595,770

Land Area 517.0m²
Land Registration Registered
Land Price \$775,500

Featured Inclusions

- ✓ Upstyle Promotion included for FREE
- ✓ Upstyle Promotion included for FREE
- ✓ FREE Ducted Actron Air Conditioning
- ✓ FREE Ducted Actron Air Conditioning
- ✓ 20mm stone benchtops to kitchen
- ✓ 20mm stone benchtops to kitchen
- ✓ 900mm Westinghouse cooktop and oven
- ✓ 900mm Westinghouse cooktop and oven
- ✓ 2590mm ceiling height ground floor
- ✓ 2590mm ceiling height ground floor



SUNIL ROY

0433911309

sales@visionrealty.com.au

All photographs, Facades, colour schemes, floor plans and dimensions are for illustrative purposes only and may vary slightly to the end product. Prices are based on example specifications. Reserved right to change prices without notice. Additional council fees may be payable. Due to individual estate requirements and council guidelines, some typical lot widths may vary and should be used for a guide only. For further terms and conditions please discuss with your home sales consultants.

20-09-2023