

Home & Land Package



VISION REALTY

**VR PROPERTY
PACK NSW 429**

**Fixed Price
\$985,700**

9M Wide Double Storey

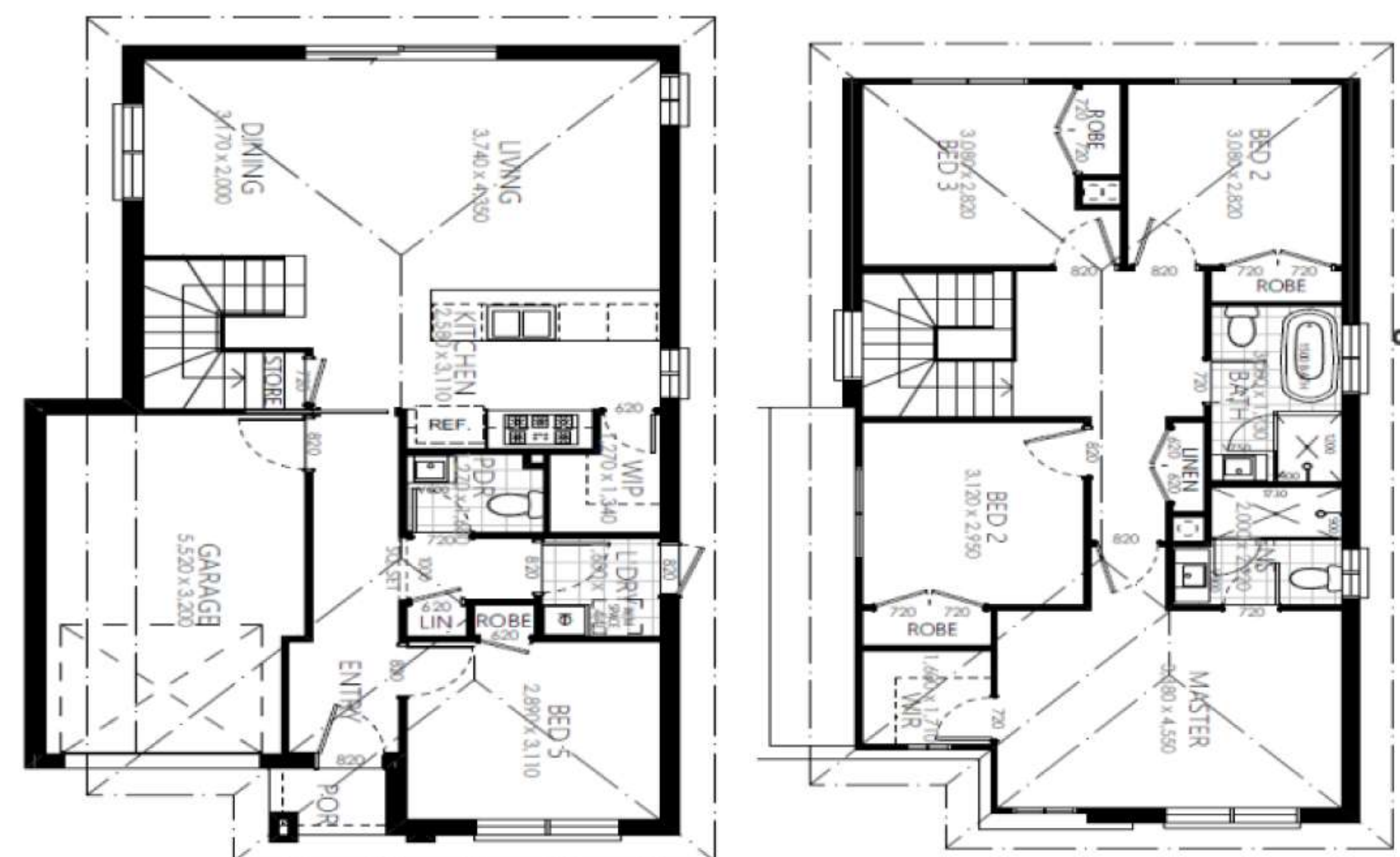


Total Area 176 m²
Build Price \$415,700

Land Area 301.0m²
Land Registration June 24
Land Price \$570,000

Featured Inclusions

- ✓ FIXED SITE COSTS
- ✓ BASIX
- ✓ Actron single phase ducted air-conditioning unit
- ✓ Plain concrete driveway up to 30m² – excludes footpath
- ✓ 2590mm high ceilings to ground floor only
- ✓ Creative Collection Range - 20mm Stone to Kitchen
- ✓ TILING Porch, hallway, dining and kitchen in 450mm x 450mm
- ✓ CARPET To remainder of home from Creative Collection Range
- ✓ OVEN 600mm stainless steel electric oven
- ✓ COOKTOP 600mm stainless steel gas cooktop (subject to gas)



SUNIL ROY

0433911309

sales@visionrealty.com.au

All photographs, Facades, colour schemes, floor plans and dimensions are for illustrative purposes only and may vary slightly to the end product. Prices are based on example specifications. Reserved right to change prices without notice. Additional council fees may be payable. Due to individual estate requirements and council guidelines, some typical lot widths may vary and should be used for a guide only. For further terms and conditions please discuss with your home sales consultants.

21-03-2024