

Home & Land Package



VISION REALTY

VR PROPERTY PACK NSW 423

Fixed Price - Full Turn
\$1,079,500

MODIFY ROCHESTER 19

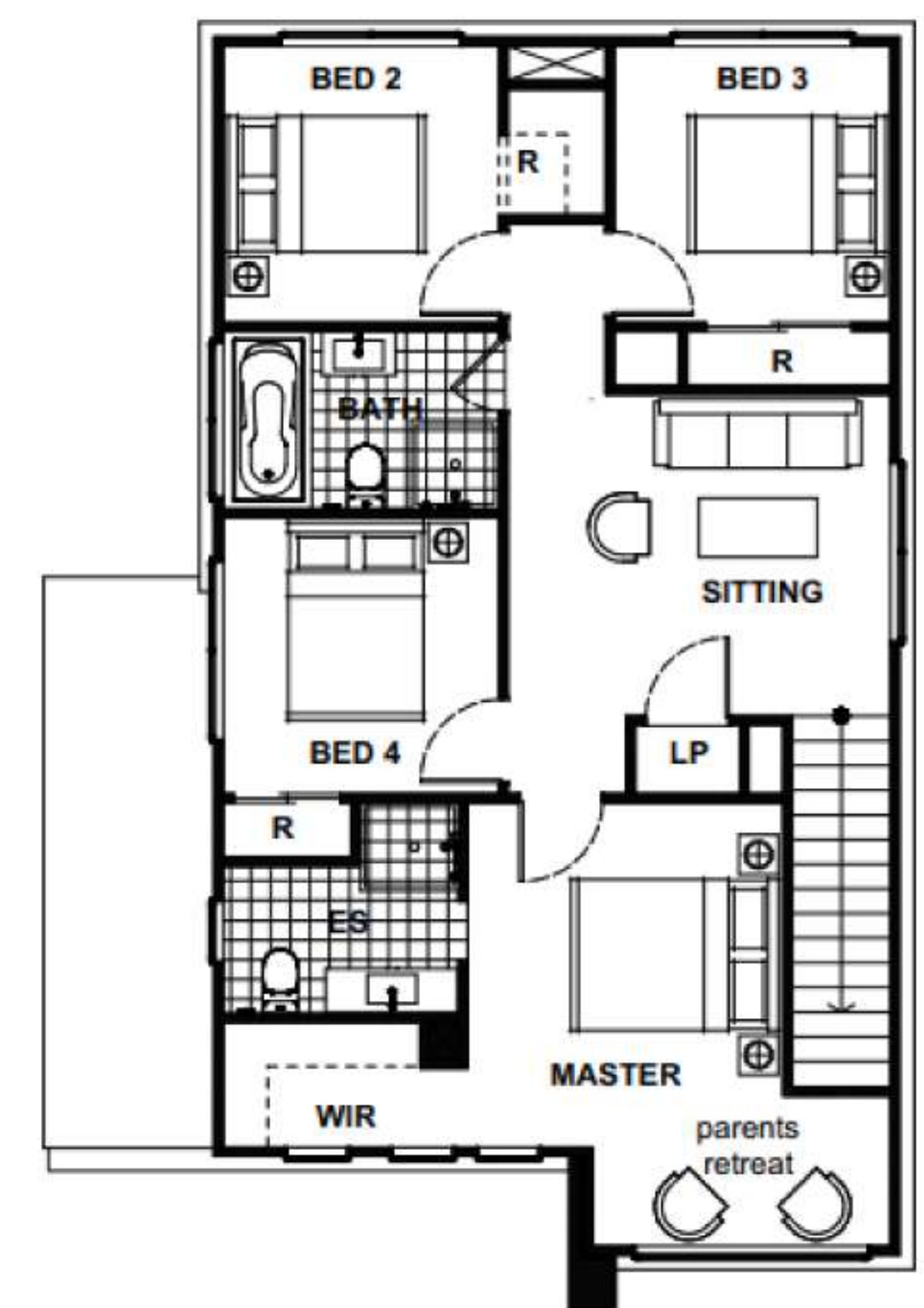
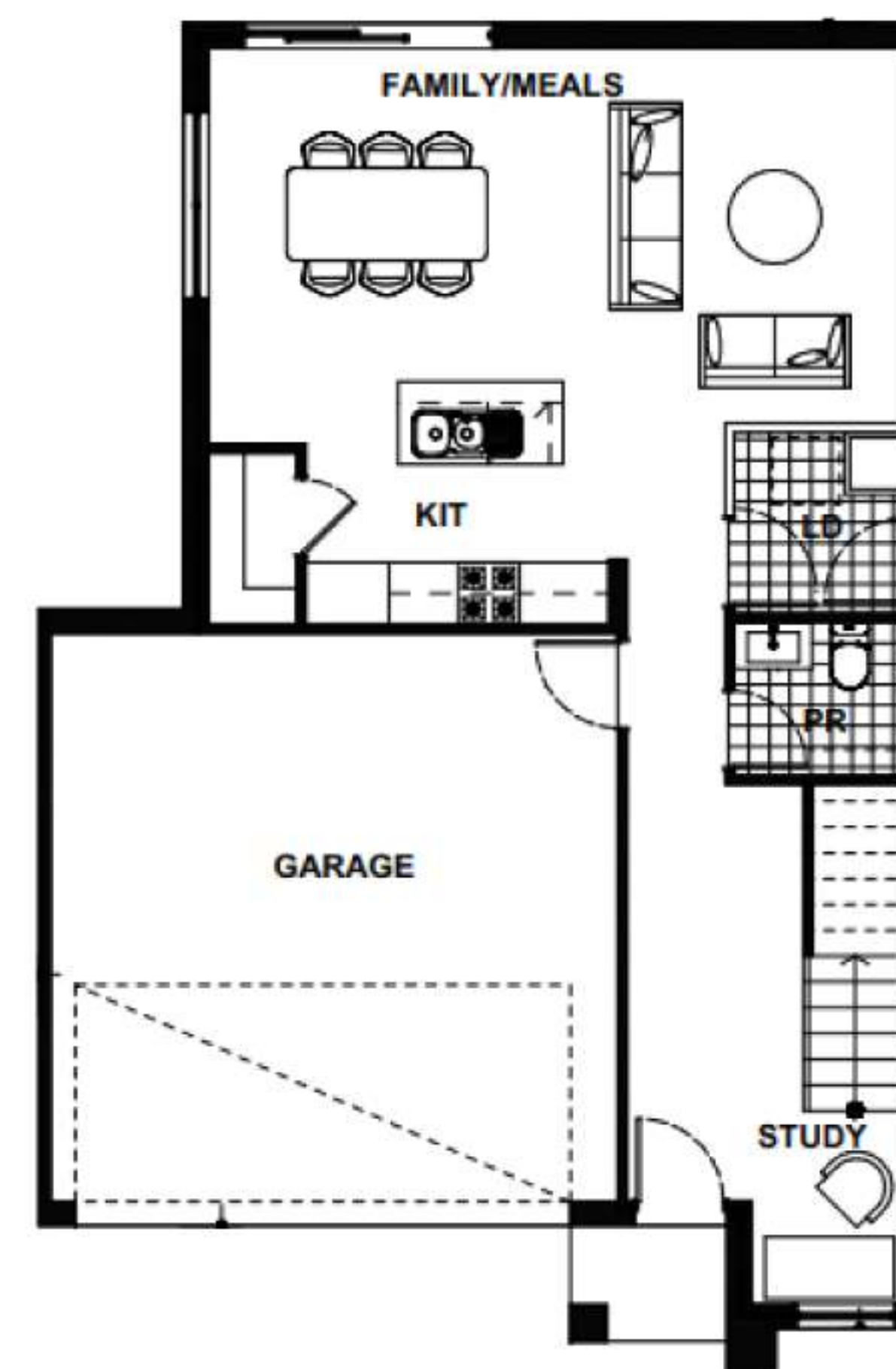


Total Area 181 m²
Build Price \$484,500

Land Area 250.4m²
Land Registration EARLY 2024
Land Price \$595,000

Featured Inclusions

- ✓ Upstyle Promotion included for FREE
- ✓ FREE Ducted Actron Air Conditioning
- ✓ 20mm stone benchtops to kitchen
- ✓ 900mm Westinghouse cooktop and oven
- ✓ 2590mm ceiling height ground floor
- ✓ Oyster light covers
- ✓ Tiles to living areas
- ✓ Carpets to bedrooms
- ✓ Blinds and flyscreens (exc. wet areas & glass doors)
- ✓ Landscaping and fencing included



SUNIL ROY

0433911309

sales@visionrealty.com.au

All photographs, Facades, colour schemes, floor plans and dimensions are for illustrative purposes only and may vary slightly to the end product. Prices are based on example specifications. Reserved right to change prices without notice. Additional council fees may be payable. Due to individual estate requirements and council guidelines, some typical lot widths may vary and should be used for a guide only. For further terms and conditions please discuss with your home sales consultants.

20-03-2024