

# Home & Land Package



**VISION REALTY**

## VR PROPERTY PACK NSW 416

Fixed Price - Full Turn  
\$797,770

### Graphite 1 (SG)

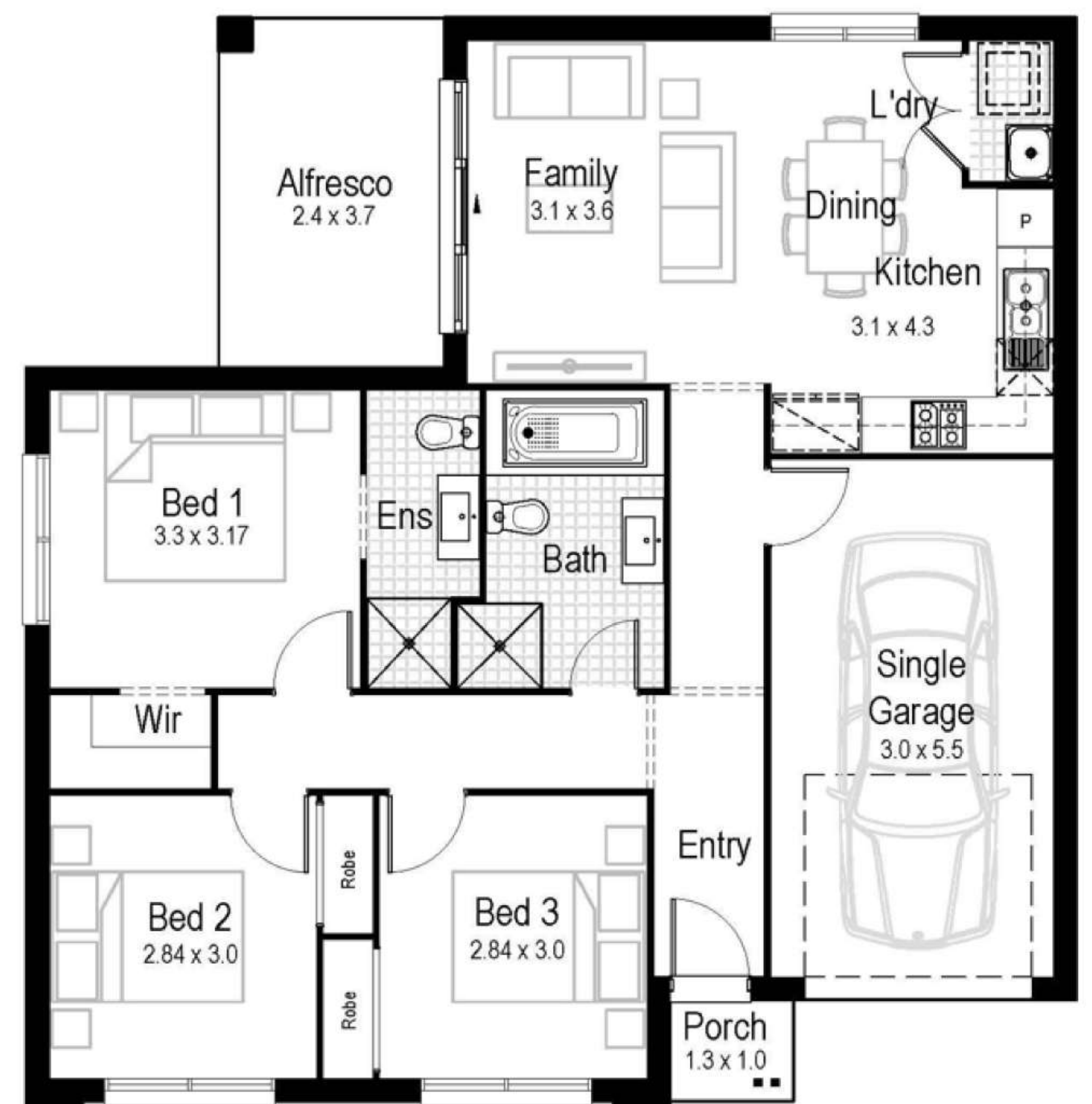


Total Area 117 m<sup>2</sup>  
Build Price \$438,770

Land Area 338.2m<sup>2</sup>  
Land Registration December 2023  
Land Price \$359,000

#### Featured Inclusions

- ✓ Hudson Homes Fixed Price Guarantee
- ✓ Hudson Homes Time Frame Guarantee
- ✓ Front façade as indicated
- ✓ Automatic Colorbond® sectional garage door with two remotes
- ✓ Fibreglass mesh barrier screen door to front, laundry and rear
- ✓ Tiles to entry, hallways, family, kitchen and meals areas
- ✓ Carpet to all other internal areas (applicable to double storey)
- ✓ 20mm stone benchtops to kitchen
- ✓ Day/night ducted air conditioning system (suitable to the size of
- ✓ LED downlights throughout, excluding garage



**SUNIL ROY**

**0433911309**

[sales@visionrealty.com.au](mailto:sales@visionrealty.com.au)

All photographs, Facades, colour schemes, floor plans and dimensions are for illustrative purposes only and may vary slightly to the end product. Prices are based on example specifications. Reserved right to change prices without notice. Additional council fees may be payable. Due to individual estate requirements and council guidelines, some typical lot widths may vary and should be used for a guide only. For further terms and conditions please discuss with your home sales consultants.

20-03-2024