

Home & Land Package



VISION REALTY

VR PROPERTY PACK NSW 414

Fixed Price - Full Turn
\$840,040

BRASS 17

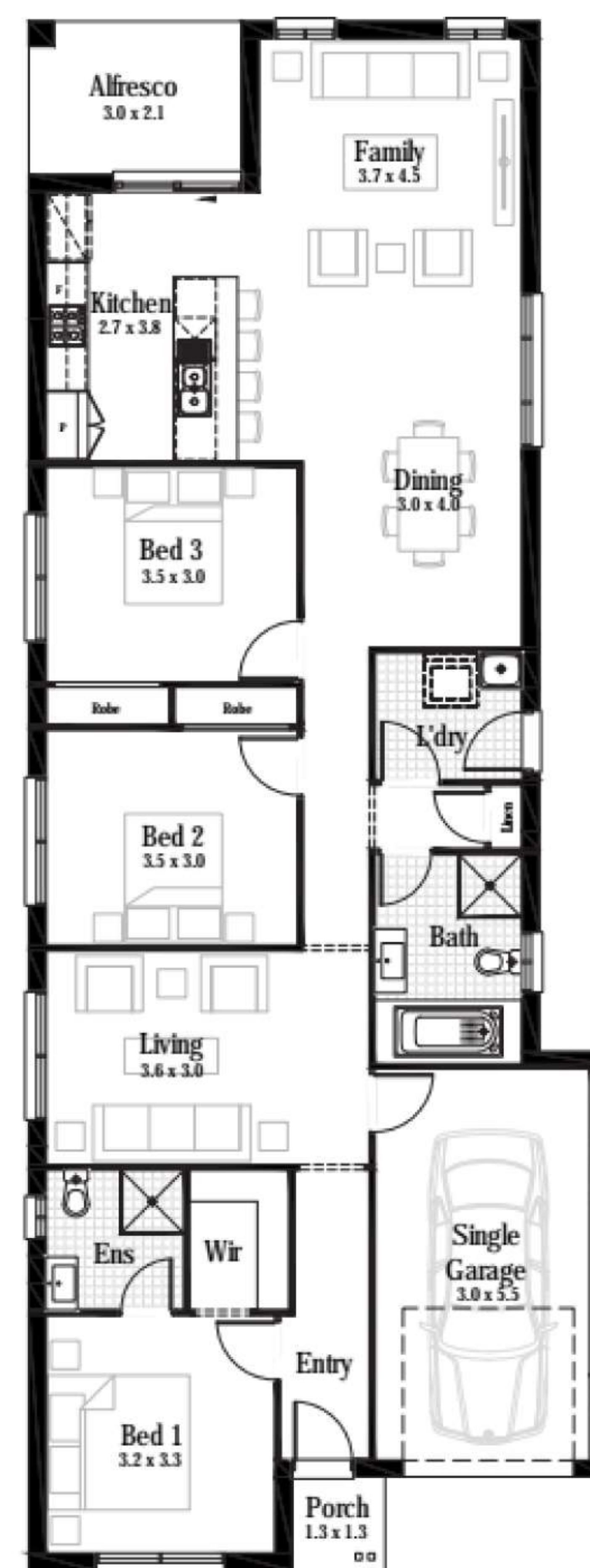


Total Area 159 m²
Build Price \$451,040

Land Area 315.0m²
Land Registration May-23
Land Price \$389,000

Featured Inclusions

- ✓ Hudson Homes Fixed Price Guarantee
- ✓ Hudson Homes Time Frame Guarantee
- ✓ Front façade as indicated
- ✓ Automatic Colorbond® sectional garage door with two remotes
- ✓ Decorative glass panel front entry door with painted finish, single
- ✓ Fibreglass mesh barrier screen door to front, laundry and rear
- ✓ Tiles to entry, hallways, family, kitchen and meals areas
- ✓ Carpet to all other internal areas (applicable to double storey)
- ✓ 20mm stone benchtops to kitchen
- ✓ Stainless steel dishwasher



SUNIL ROY

0433911309

sales@visionrealty.com.au

All photographs, Facades, colour schemes, floor plans and dimensions are for illustrative purposes only and may vary slightly to the end product. Prices are based on example specifications. Reserved right to change prices without notice. Additional council fees may be payable. Due to individual estate requirements and council guidelines, some typical lot widths may vary and should be used for a guide only. For further terms and conditions please discuss with your home sales consultants.

20-03-2024