

# Home & Land Package



**VISION REALTY**

## VR PROPERTY PACK NSW 159

Fixed Price - Full Turn  
\$1,060,750

### GEORGE 195

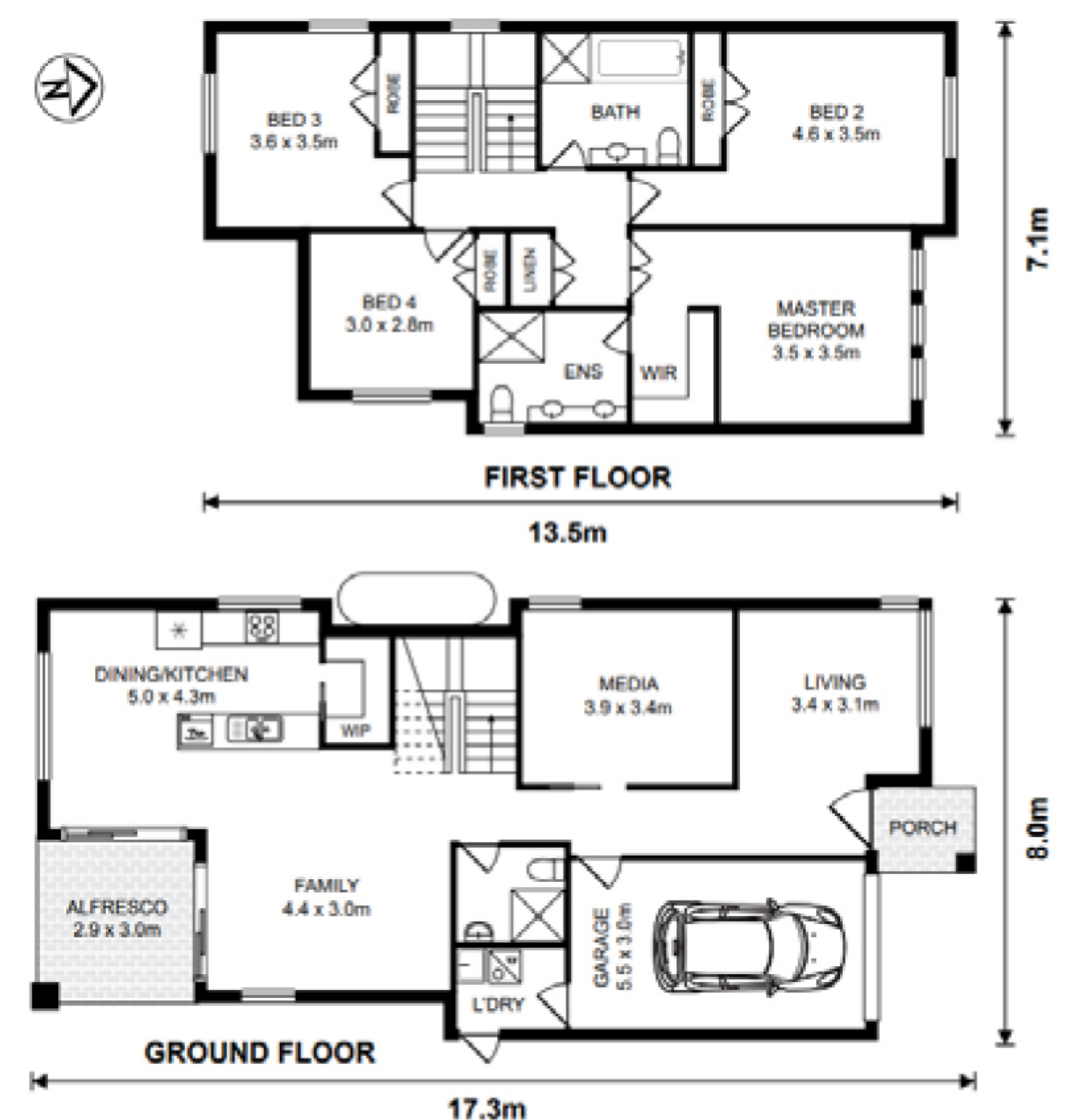


Total Area 195 m<sup>2</sup>  
Build Price \$366,750

Land Area 336.9m<sup>2</sup>  
Land Registration Registered  
Land Price \$694,000

#### Featured Inclusions

- ✓ 1 this is a very long inclusion item
- ✓ 2 this is a very long inclusion item
- ✓ 3 this is a very long inclusion item
- ✓ 4 this is a very long inclusion item
- ✓ 5 this is a very long inclusion item
- ✓ 6 this is a very long inclusion item
- ✓ 7 this is a very long inclusion item
- ✓ 8 this is a very long inclusion item
- ✓ 9 this is a very long inclusion item
- ✓ 10 this is a very long inclusion item



SUNIL ROY

0433911309

sales@visionrealty.com.au

All photographs, Facades, colour schemes, floor plans and dimensions are for illustrative purposes only and may vary slightly to the end product. Prices are based on example specifications. Reserved right to change prices without notice. Additional council fees may be payable. Due to individual estate requirements and council guidelines, some typical lot widths may vary and should be used for a guide only. For further terms and conditions please discuss with your home sales consultants.

01-02-2024